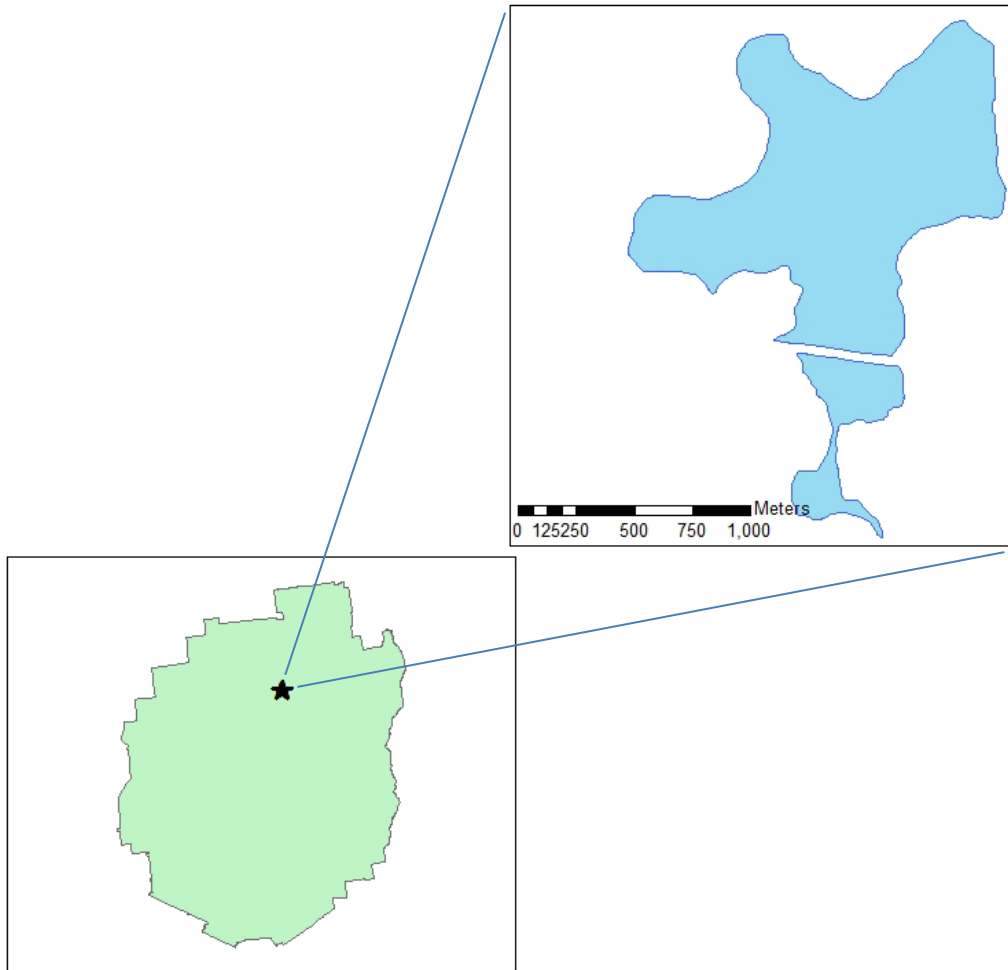


Lake Colby Eurasian Watermilfoil Survey 2013

(Post-harvest)



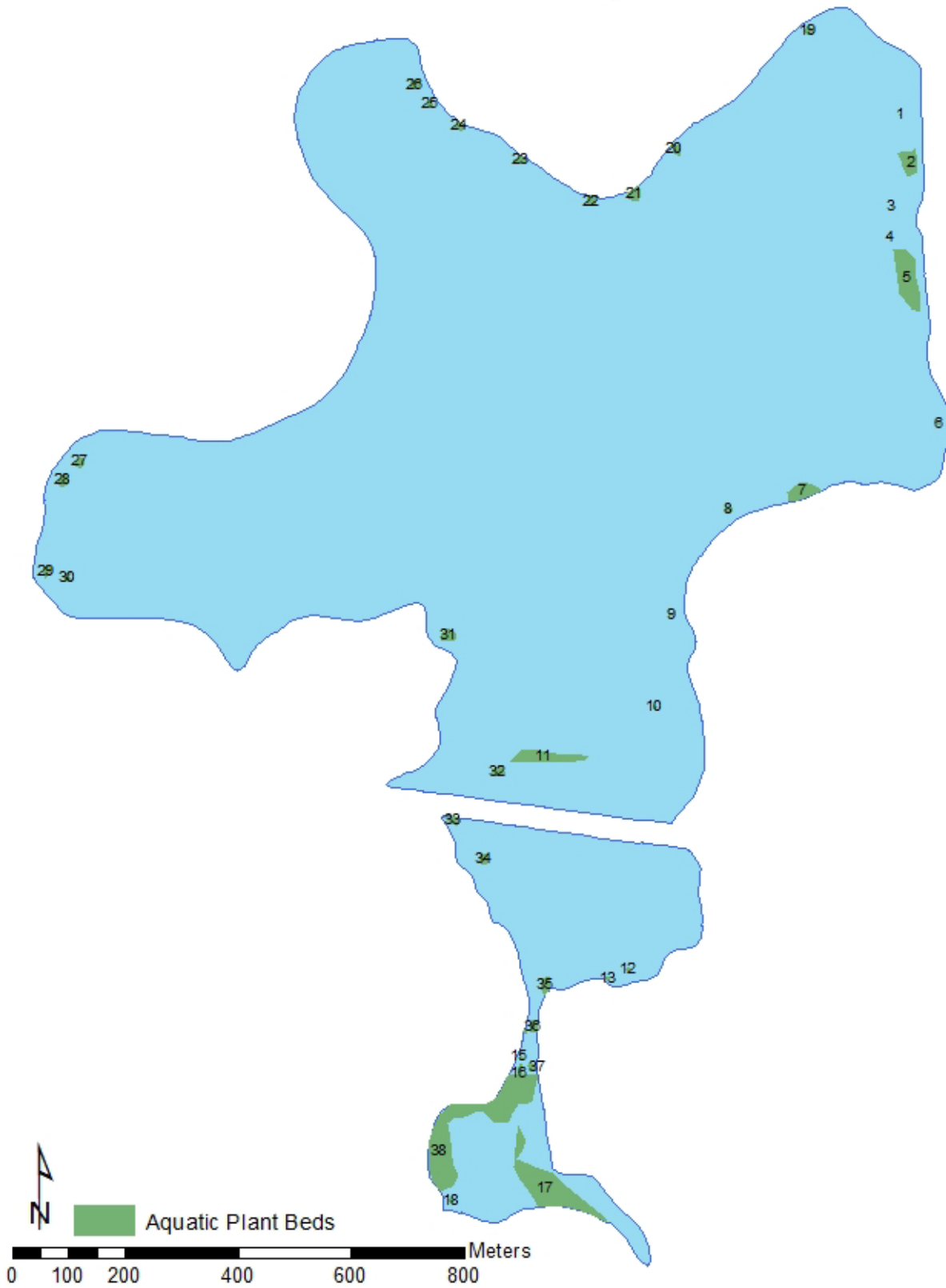
Map 1: Location of Lake Colby in relation to the Adirondack Park.

A Eurasian watermilfoil (hereafter called milfoil) survey was conducted at Lake Colby on August 7, 2013. The survey was conducted by a four person crew deployed in two person teams in canoes. Each team conducted a serpentine search pattern throughout the littoral zone. Milfoil plants and beds were mapped using hand held GPS units. GPS data was entered into mapping software (ArcGIS) to generate the milfoil map and to calculate acreage.

Milfoil was found at 38 locations in beds ranging from 0.002 to 2.637 acres in size (Table 1 and Map 2). Total milfoil coverage was about 7.76 acres. Milfoil abundance was very low (abundance <5%) in the majority of the 38 beds. The largest and densest milfoil beds were found in Little Colby, beds 17 and 38.

Table 1: Abundance and area of Eurasian watermilfoil beds in Lake Colby. Refer to Map 2 for plant bed locations.

Bed Number	Abundance	Area (acres)
1	16 to 25%	0.006
2	26 to 50%	0.273
3	< 5%	0.002
4	< 5%	0.002
5	16 to 25%	0.831
6	< 5%	0.010
7	16 to 25%	0.291
8	6 to 15%	0.038
9	< 5%	0.010
10	< 5%	0.010
11	> 50%	0.540
12	< 5%	0.010
13	< 5%	0.010
14	6 to 15%	0.010
15	6 to 15%	0.011
16	< 5%	0.068
17	> 50%	1.633
18	< 5%	0.022
19	< 5%	0.038
20	< 5%	0.066
21	< 5%	0.119
22	< 5%	0.067
23	6 to 15%	0.072
24	< 5%	0.052
25	< 5%	0.033
26	< 5%	0.063
27	< 5%	0.062
28	< 5%	0.090
29	< 5%	0.062
30	< 5%	0.043
31	6 to 15%	0.116
32	< 5%	0.084
33	< 5%	0.067
34	< 5%	0.076
35	6 to 15%	0.114
36	< 5%	0.072
37	< 5%	0.048
38	26 to 50%	2.637



Map 2: Locations of Eurasian watermilfoil beds detected in Lake Colby during the surface survey on August 7, 2013. Data for plant beds can be found on Table 1.

LAKE COLBY MILFOIL CONTROL 2013

Table 1. Summary of daily activities.

Date	Locations	Hand Harvest (# of bags)	Benthic Mats (# of mats)
6/3	Whole lake North Bay	Reconnaissance 9	
6/4	North Bay Trestle Bay	6	5 removed 11 found and moved
7/10	West Bay	24	
7/11	West Bay	16	
7/25	Trestle Bay	54	
7/29	North Bay	26	
7/30	Trestle Bay	12	
7/31	Trestle Bay Hospital	6 54	
8/1	Hospital	20	
8/2	Boat Launch to Keet's	8	
8/5	Boat Launch to West Bay	8	
8/6	West Bay to Keet's	10	
	SUMMER TOTALS	253 bags (~6,325 lbs)	11 mats

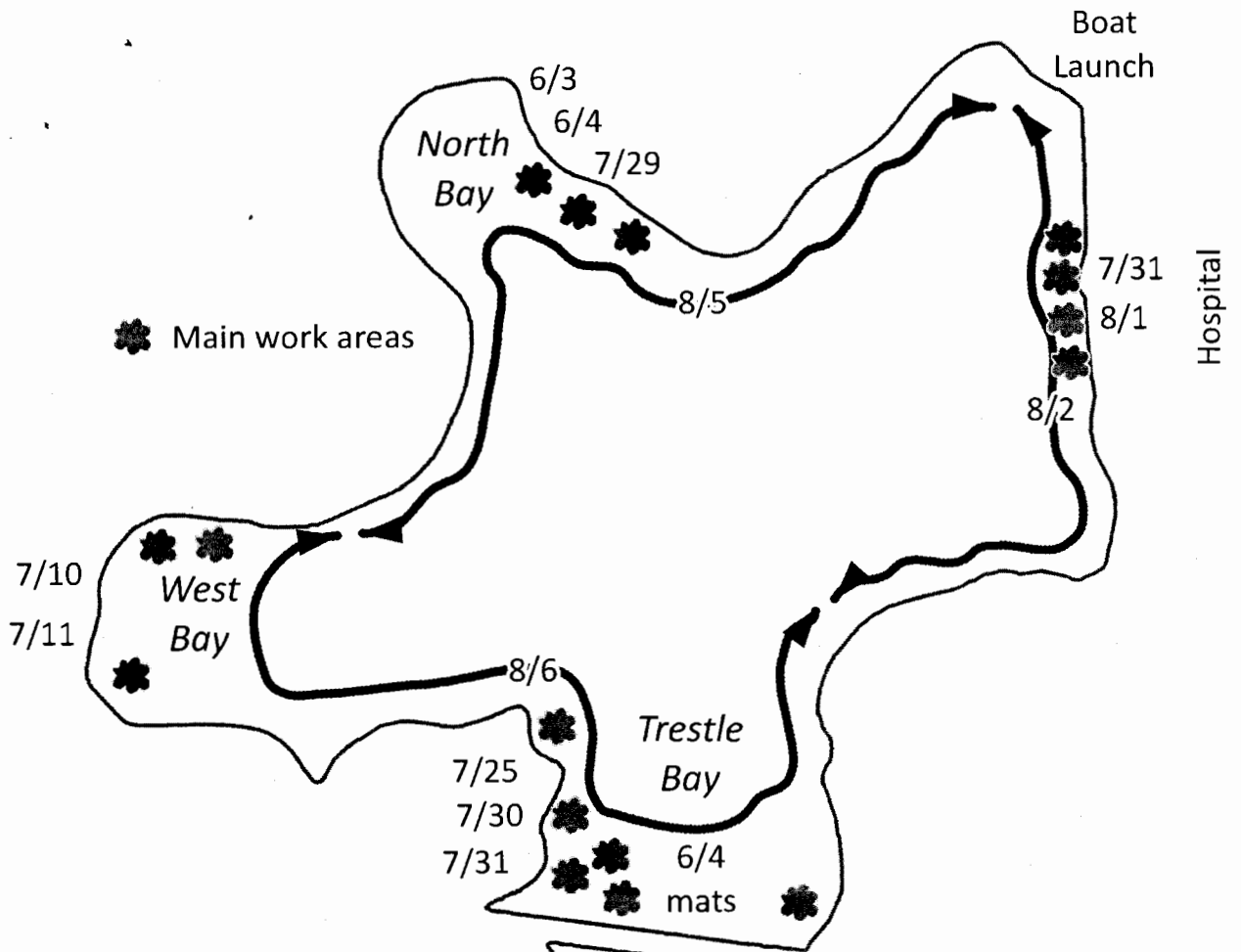


Figure 1. Locations corresponding to daily activities.

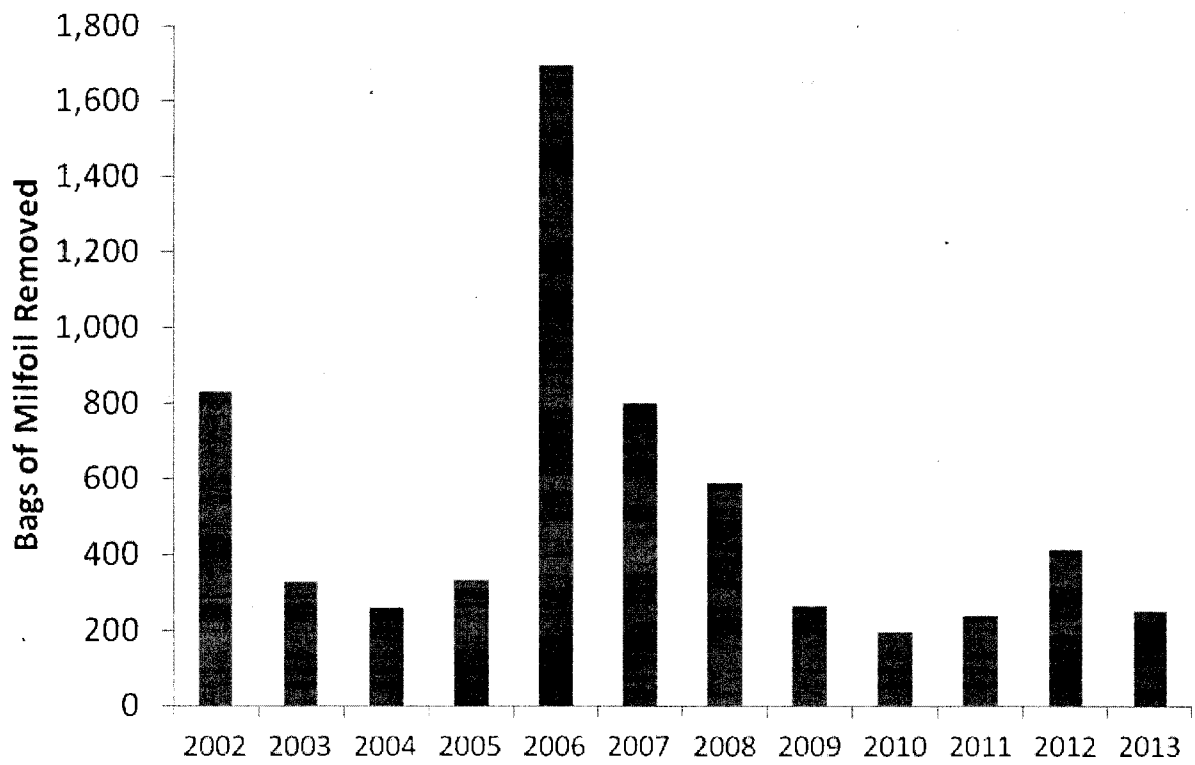


Figure 2. Bags of milfoil removed for each year of control.

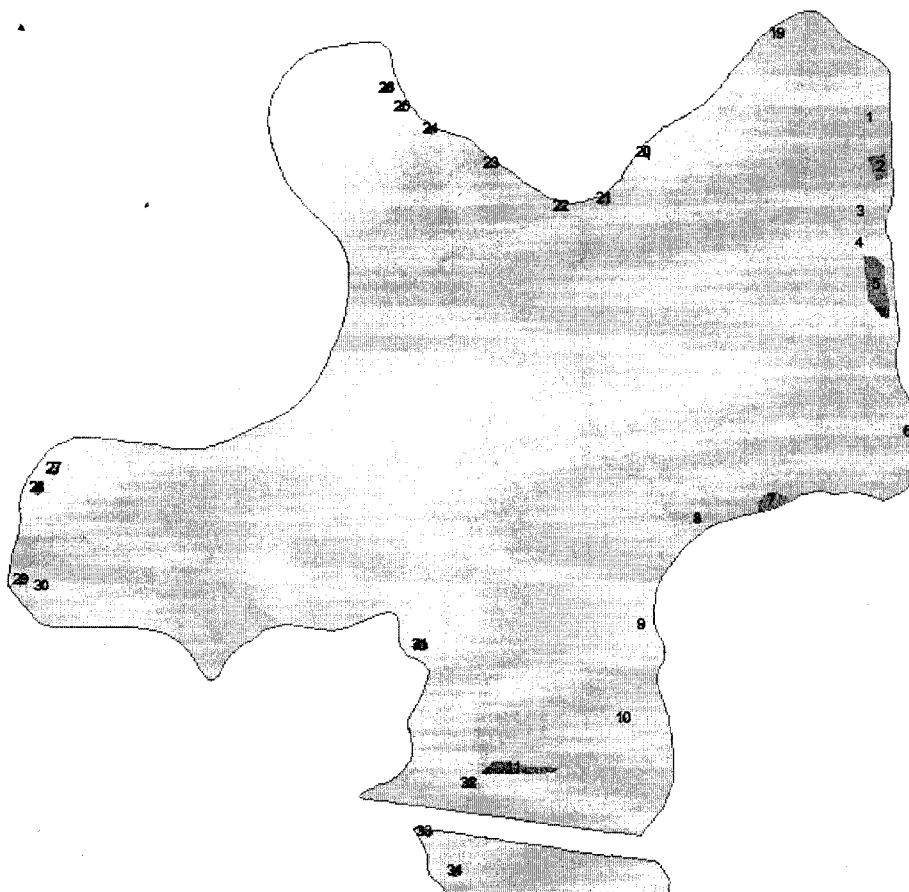


Figure 3. Post control milfoil locations, surveyed on 8/7/2013.